

## Clues Continued...

Begin at the chimney ruins, marked on the map by X. As you pass through the rooms, try to recall the specs. Under the electric tower you go (or around if you like). Either way, walking the mill's outline is a short hike.

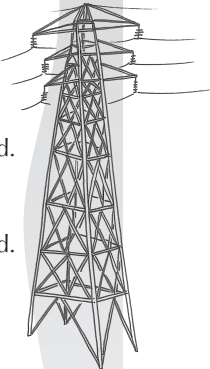
### The Old Road

Travel back to the red-rail steps. At the top, please stand. Look left between tall utility poles. Survey the land. Find the path of gray that marks the long-ago road. Wagons traveled this to the mill then emptied their load.

### Quest's End

The Cascade Race fence on right skirts this old road, leading the way to your treasure, the mother lode! Follow this modern fence down to the post at the end. To the rock down 'round the corner you must bend.

Under you will find the quest box and ink stamp, too. Sign the log and stamp your quest without others in view. Repack the box and return it stealthily to its hiding place. We hope completing this quest put a smile on your face.



Canal basin and Schumacher Cascade Mills circa 1880s  
COURTESY/CASCADE LOCKS PARK ASSOCIATION

*This quest was written by Denny Reiser, a volunteer for Cascade Locks Park Association, Cuyahoga Valley National Park and Metro Parks, Serving Summit County; and by Keith Woodruff for the Ohio & Erie Canalway and Arrye Rosser of Cuyahoga Valley National Park. Michelle LaNasa, Conservancy for Cuyahoga Valley National Park, drew the illustrations. Summit Metro Parks created the map.*

revision date JUN 2016

## How to Quest

Quest clues and maps—created by teachers, volunteers, and/or park staff—will help you discover the natural and cultural gems of the Ohio & Erie Canalway. At the end of each quest is a hidden treasure box. Sign your name in the logbook, stamp this page and return the box to its hiding place.

**The questing season runs from April 15 through November 15.**

Notice a problem or have suggestions for improving this quest? Contact [info@cascadelocks.org](mailto:info@cascadelocks.org).

STAMP HERE

## About This Program

I'm Arrye Rosser, interpretive and education specialist at Cuyahoga Valley National Park. I'd like to thank everyone who helped fulfill my dream of bringing questing to Ohio. This project was made possible by the generous support of a 2010 Parks as Classrooms grant from the National Park Service and is a partnership between many organizations.

So far, more than 100 teachers, volunteers and park staff have been involved in writing and field testing our Canalway Quests. Our plan is to create many more in the years ahead. If you would like to volunteer, contact [cuva\\_questing@nps.gov](mailto:cuva_questing@nps.gov).

Special thanks to Emily Bryant and Steven Glazer.

The Ohio & Erie Canalway celebrates the rails, trails, landscapes, towns and sites that grew up along the first 110 miles of the canal that helped Ohio and our nation grow.

**For more information and to get copies of other quests, visit [ohioandieriecanalway.com](http://ohioandieriecanalway.com) and search under Activities for Questing.**

**Summit  
Metro  
Parks**



SUMMIT COUNTY SECTION  
AKRON  
CASCADE LOCKS PARK



Schumacher Cascade Mills site. © D.J. REISER

## Canalway Quest

### The Rise of Akron Quest

Explore how the Cascade Locks helped Akron grow into an industrial city.



## Planning Ahead

This treasure hunt is a short, easy walk that takes about 40 minutes; allow more time if you enjoy reading exhibits in detail. All surfaces are paved or brick. There are some stairs to climb and a bridge to cross. If it's bright out, we recommend sunscreen and a hat. You will need a pen or pencil to sign the logbook. Some people prefer using their own signature stamp and ink pad or marker.

You can extend your trip by doing other area quests or by visiting the historic Mustill Store. Hours may vary, but typically are Tuesdays through Sundays, 10 a.m. to 4 p.m., April through October. Check [cascadelocks.org](http://cascadelocks.org) for details.

## Getting There

This quest is in Cascade Locks Park at 57 W. North Street, just west of Howard Street, Akron, Ohio 44304. This quest starts at the kiosk in the south parking lot, across the street from the Mustill Store.

## Clues

### Dynamics of Change

Start your journey at the kiosk's Dynamics of Change. Here, read all you can about the Cascade Range. Within a mile, the elevation dropped 150 feet. For businessmen long ago, it was a fact so sweet!

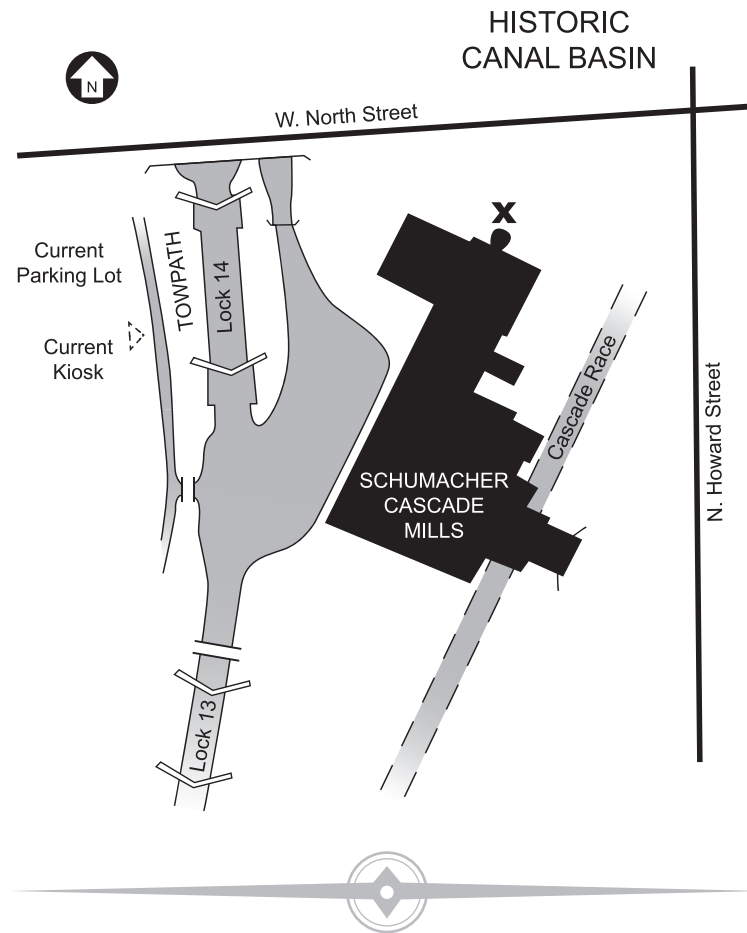
Building the Ohio & Erie Canal through here  
Challenged the 19th century engineer.  
To move boats up and down, canals use locks,  
Water-filled elevators made of wood and blocks.

The bigger the height change, the more you need.  
The more locks you have, the slower the speed.

Having to pass through 15 locks in the stretch of a mile  
Delayed canal travelers by half a day — quite a while!  
Some enterprising folks knew just what to do.  
They opened shops for those waiting and Akron grew.



Ohio & Erie Canal, mid-1800s  
COURTESY/SUMMIT  
METRO PARKS



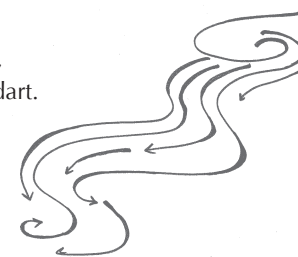
### When Flour was Power

Now, turn a bit and look back toward North Street.  
Stroll toward the panel by the smooth wooden seat.

The change in elevation also helped industry to grow.  
Here, water falling from high to low rushed in a flow.  
Harnessing water for power at Schumacher's mill  
Produced plenty of wheat flour, but no electric bill.

### Cascade Race

Now turn to the right. Head uphill to make your start,  
Then left — over Lock 13's "wooden" bridge — you dart.  
Near the bike rack is an exhibit, The Cascade Race.  
Read it carefully to increase your knowledge base.



Move a little to the right and in toward the fence.  
Look into the stony hole and end the suspense.

The Cascade Race and tunnel were built right here.  
Bringing river water for power made everyone cheer.  
The Little Cuyahoga River was the race's source.  
Its water was diverted through a man-made course.

Down in the hole, the canal-era remains still show.  
When you spot the opening, you will know  
Where the tunnel began that fed Schumacher's mill.  
Today, the passage runs under North Street still.

### Imagine the Mill

Leaving the race to the red-rail stairs you should head.  
But don't walk down them, pause at the top instead.  
You're on the brink of a step back through time:  
A chance to learn about the mill's history in rhyme.

Gazing ahead and aside, try imagining in this space  
The size of the mill, outlined today by a stone trace.  
Down the steps, toward the big red wheel you go.  
Read the exhibits and stories and be in the know.

### Generations of Power

Read the first two panels and the facts they instill  
Of how generations of power fueled the mill.  
See the drawing on the second panel? Take a look.  
Find the Cascade Race; follow the path its water took.

The race turned the wheel, powered business until  
It was clear more energy would help grow the mill.  
A coal-furnace making steam was added to the mix.  
The towering chimney on the drawing marks the fix.

### Circular Foundation

Head toward North Street, bearing right, to see what you find.  
As you move, keep the mill's layout and your map in mind.  
If the mill was standing, which room would you be in now?  
Read the exhibit on your left and you might say wow!

### Walk the Line

The half-circle ruin is where the chimney once stood.  
Eye the quest map in hand — it'll do you some good.  
The mill's footprint, circa 1880, is outlined herein.  
You can walk it if you like. Go on, give it a spin!

