

Clues Continued...

Turn around and head left, uphill, on this path called Pleasure Drive. Originally it was gravel and 15 feet wide. Today, it's narrower by five.

Read the first and then the second (slightly hidden) marker you see. They describe the next garden, redesigned in '29—but not by me.

Which landscape architect redesigned the English Garden?

_____ Biddle _____

Step inside this walled “secret garden.” A water goddess waits within. Explore awhile and relax on a bench, before exiting where you came in.



Construction of the English Garden, 1914.

From the sign you are faced with four directions. Which one to choose? Go toward the one that reads DELL and learn how this space was used. Enter into this informal garden, another part of the old quarry. Virginia Seiberling was married here. Isn't that a nice story?

Next, I challenge you to locate the stone tunnel to find a hidden box. Don't be spotted by one of our estate's red-tailed hawks. Along the right-hand wall of the tunnel, there is a large gap in the stone. Pull out the box, sign the logbook, stamp your page, and return the box to its home.

Now exit the tree-sheltered Dell through the stone underpass. Moving from shade to light was my intention. Notice the contrast? Look familiar? Beyond the lawn ahead is where we made our start. I have enjoyed your company, but the time has come for us to part.

I hope you'll return to see these lovely gardens in a different season. If my landscape design pleases, you don't need another reason.

This quest was written by Toivo Motter and Katherine Trettel of Stan Hywet Hall & Gardens with support from Arrye Rosser of Cuyahoga Valley National Park and volunteers Denny Reiser, Jim Urban, Pat Myers, and Marybeth Cieplinski. All historic photos are courtesy of Stan Hywet Hall & Gardens.

Revised April 2025

How to Quest

Quest clues and maps—created by teachers, volunteers, and/or park staff—will help you discover the natural and cultural gems of the Ohio & Erie Canalway. At the end of each quest is a hidden treasure box. Sign the logbook, make a unique stamp, and return the box to its hiding place.

STAMP HERE

The questing season runs from April 15 through November 15.

Notice a problem or have suggestions for improving this quest? Contact Stephanie Toole at 330.315.3261 or SToole@StanHywet.org.

About This Program

I'm Arrye Rosser, interpretive and education specialist at Cuyahoga Valley National Park. I'd like to thank everyone who helped fulfill my dream of bringing questing to Ohio. **This project was made possible by the generous support of a 2010 Parks as Classrooms grant from the National Park Service** and is a partnership between many organizations.

So far, more than 100 teachers, volunteers, and park staff have been involved in writing and field testing our initial series of Canalway Quests. Our plan is to create many more in the years ahead. If you would like to volunteer, contact me at 440.546.5992 or cuva_questing@nps.gov.

Special thanks to Emily Bryant and Steven Glazer.

The Ohio & Erie Canalway celebrates the rails, trails, landscapes, towns, and sites that grew up along the first 110 miles of the canal that helped Ohio and our nation grow.

For more information and to get copies of other quests, visit ohioandieriecanalway.com and search under Activities.



SUMMIT COUNTY SECTION
STAN HYWET HALL & GARDENS



Construction of Stan Hywet , c. 1915.

Canalway Quest

Designing the Landscape Quest

Stroll the Stan Hywet Estate, exploring how the spectacular grounds complement the Manor House.

Planning Ahead

This treasure hunt takes about 60 minutes. Allow more time if you want to linger in the gardens. Most surfaces are relatively firm and level, but there are uneven stone stairs in places. Walking shoes, a sunhat and water bottle are recommended. Some spots may be wet or slippery after a heavy rain. You will need a pen or pencil to sign the logbook. Some people prefer using their own signature stamp and ink pad or marker.

This quest is entirely outdoors. Note that the Estate has an admission price. Members are free. The grounds are open Tuesday through Sunday from 10 a.m. - 6 p.m. Call 888.836.5533 or visit stanhywet.org for information about extending your visit with a house tour. Bring extra money if you want to visit Molly's Shop & Courtyard Café.

At admissions, **pick up a Visitor's Guide** containing an Estate Map to assist you on this adventure.

Getting There

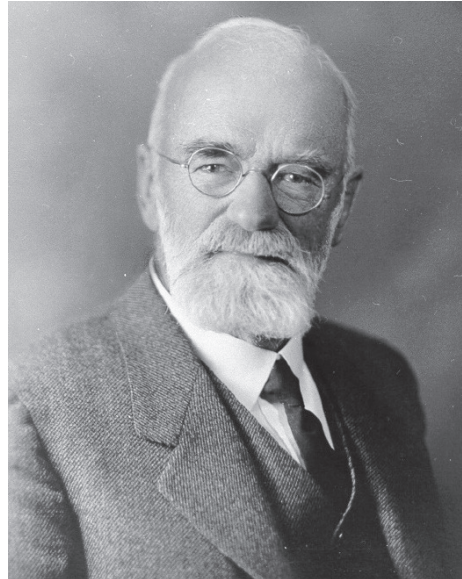
Stan Hywet Hall & Gardens is at 714 North Portage Path, Akron, Ohio 44303. Pay admission at the front desk and then walk through the orientation room. Your quest begins outside of the admissions area exit door.

Clues

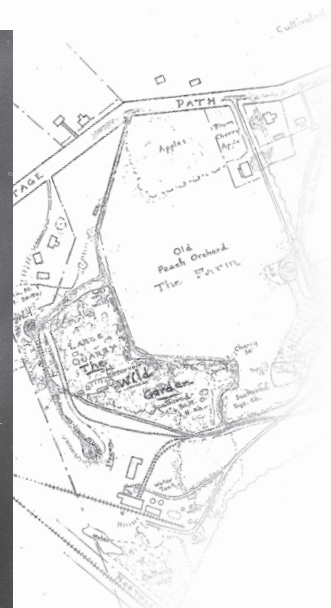
Hello, I am Landscape Designer Warren Manning,
Hired by the Seiberlings for Stan Hywet grounds planning.
The state of Massachusetts is where I was born and bred.
Early in my career, I worked for the great Frederick Law Olmstead.
As the father of landscape architecture, Olmstead left his mark.
His most famous project was designing New York's Central Park.

The Seiberlings' goal was to make Stan Hywet a special place
To raise their family and entertain guests away from the rat race.
It would be a country retreat far from Akron, a bustling city,
Where F.A. Seiberling made his name in the rubber industry.

Exit Admissions, take a left, and leave the Carriage House site.
Point toward the front gate with the Manor House on your right.
Mulch underfoot, step to the edge of the tall trees ahead.
Beyond is what I found in 1911 when I first surveyed this spread.



Warren Manning



The property, mostly farmland, included these short trees all in a row.
Together they formed a productive orchard where apples still grow!
Along the drive I kept the orchard, adding it into the design
To mask—then reveal—the grand house and lawn beyond its tree line.

Now turn right and walk on the grass by the drive. At the sign,
STOP to view the Tudor-revival house, a Charles Schneider design.
We worked together to create harmony between land and house—
Even though, on a few occasions, my ideas he did not espouse!

Cross at the walk, turn right, keeping evergreens on your left.
Walk down "Ribbon Drive" toward the glass house just over the crest.
On your right was the Seiberlings' paddock which corralled many a horse.
Before it was an orchard with plums, cherries, and apples (of course)!

Continue along. Bear left at the Y and then turn left once more.
Up a few steps—stroll through the brick-pillared grape arbor.

Don't walk too far, sir or madam! Exit left at the first break you see.
At the corner of the second bed, on the right, a concrete marker will be.
Worn down by time and sometimes hidden among the greenery,
This stone was part of my grid system for designing this scenery.
There were many others elsewhere, within and beyond the front gate.
Workers used the markers to locate themselves on plans for the Estate.

Now return to the grape arbor. Re-enter and take a left turn.
At the T go right, to the balcony's edge, where we'll briefly adjourn.
From this vantage, a vista through the trees reveals Cuyahoga Valley.
The Sand Run area was within the Estate. On horse trails, family did sally.

Safely peer over the edge. Gaze down below and beyond.
Can you guess what this place once was? A hill? A pond?
Before we move on and I share more of my story
I will tell you Stan Hywet is Old English for "Stone Quarry."

The stone taken from here was ground up to make glass.
I filled the depressions with water, planted foliage and grass.



Construction of the Lagoon, c. 1914.

Now turn 'round and stroll along a row of birch called an allée.
The trees were *pleached* into arches to form a long "hallway."
Follow the path to the house down this lane, shady and sublime,
Separating lagoon from garden on your left—a more formal design.

At the third 4-way intersection, go right—on your left, a brick wall.
Keep walking straight until you see a sign that's not very tall.
To complete your next task, eager questers, slow down your pace.
First and middle initials are below. Read the sign to fill in the space.

Which landscape architect helped design the Japanese Garden?

T. R. _____

Descend the stairs, then left through the arch to enter a magical spot.
Explore this landscape in miniature. Relax. Lose yourself in thought.

Wander the Japanese Garden, exit down either set of stone stair.
Turn 'round—you'll see two doors leading to a cistern down there.
The house's downspouts piped rain water underground to these tanks.
Water for the indoor pool had to be filtered, so not to grow rank.