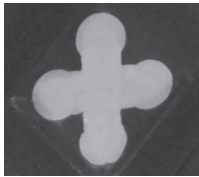


## Clues Continued...

### Servants' Wing

Onwards, passed the fountain, a wooden bench awaits. Sit or lie. Observe the servant's wing ahead, beginning low and moving high. Through basement windows are the laundry, coal room, and cannery. Through first floor windows are the kitchen and butler's pantry. Above the kitchen, a chimney blew smoke from where the staff dined. Scan with your eyes and more hidden features you'll find.



Tudor clover



Anchor



Weather vane

### Service Court

Continue left on the path. Turn right and pass an *unusual sundial*. Turn left, up three steps, and down four steps to the correct aisle. In a walled area to your left, laundry once hung to dry. Four steps down, under the Long Porch, is a bricked route of supply. Out of guests' sight, deliveries would arrive. Today, though, we won't be taking the Service Court drive.

### Breakfast Room

Turn right and climb 11 steps. To your left, take four more. Bear right to find where flowers reflect the colors of inside décor. Notice *glass panes of many shades*, made to look old when applied. Peek through a clear basement one to view the pool inside!

### F.A. Seiberling's Office

Continue around the corner. Stop at stairs for the office of F.A. Turn and look down at the metal door. Inside a quest box does lay! Secretly sign the log, stamp your brochure, and put everything back. Follow the path around to the front. By now, you've got the knack.

We're where we started at the beginning of this quest. How about another adventure? You decide what's next. I want to thank you for merrily following me along. May your powers of observation always be strong!

*This quest was written by Toivo Motter of Stan Hywet Hall & Gardens with support from Arrye Rosser of Cuyahoga Valley National Park and Director of Historic Structures Mark Gilles of Stan Hywet Hall & Gardens. The historic photos are courtesy of Stan Hywet Hall & Gardens. Contemporary photos are by Volunteer Denny Reiser of Cuyahoga Valley National Park.*

revision date APRIL 2025

## How to Quest

Quest clues and maps—created by teachers, volunteers, and/or park staff—will help you discover the natural and cultural gems of the Ohio & Erie Canalway. At the end of each quest is a hidden treasure box. Sign your name in the logbook, stamp this page, and return the box to its hiding place.

STAMP HERE

The questing season runs from  
April 15 through November 15.

Notice a problem or have suggestions for improving this quest? Contact Stephanie Toole at 330.315.3261 or [SToole@StanHywet.org](mailto:SToole@StanHywet.org).

## About This Program

I'm Arrye Rosser, interpretive and education specialist at Cuyahoga Valley National Park. I'd like to thank everyone who helped fulfill my dream of bringing questing to Ohio. This project was made possible by the generous support of a 2010 Parks as Classrooms grant from the National Park Service and is a partnership between many organizations.

So far, more than 100 teachers, volunteers, and park staff have been involved in writing and field testing Canalway Quests. Our plan is to create many more in the years ahead. If you would like to volunteer, contact me at 440.546.5992 or [arrye\\_rosser@nps.gov](mailto:arrye_rosser@nps.gov).

Special thanks to Emily Bryant and Steven Glazer.

The Ohio & Erie Canalway celebrates the rails, trails, landscapes, towns, and sites that grew up along the first 110 miles of the canal that helped Ohio and our nation grow.

For more information and to get copies of other quests, visit [ohioandiericanalway.com](http://ohioandiericanalway.com) and search under Activities for Questing.



SUMMIT COUNTY SECTION  
STAN HYWET HALL & GARDENS



Gertrude Seiberling observes the Manor House construction, c.1915

## Canalway Quest

### I Spy at the Manor Quest

Spot fun architectural details on this easy walk around Stan Hywet Hall.



## Planning Ahead

This treasure hunt takes about 45 minutes. Most surfaces are relatively firm and level, but there are short stairs in places. Walking shoes and a camera are recommended. You will need a pen or pencil to sign the logbook. Some people prefer using their own signature stamp.

This quest is entirely outdoors. Note that the Estate has an admission price. Members are free. The grounds are open Tuesday through Sunday from 10 a.m. - 6 p.m. Call 888.836.5533 or visit stanhywet.org for information about extending your visit with a house tour. Bring extra money if you want to visit Molly's Shop & Courtyard Café.

At admissions, **pick up a Visitor's Guide** containing an Estate Map to assist you on this adventure.

## Getting There

Stan Hywet Hall & Gardens is at 714 North Portage Path, Akron, Ohio 44303. Pay admission. Walk to the Manor House. Your quest begins at the top of the circular drive in front of the house.

## Clues

### Meet Charles Schneider

Hello, my name is Charles Schneider.  
I won a contest to be the Seiberling's home designer.  
In 1912, my Tudor Revival design was selected.  
During our walk, you'll spy details otherwise neglected.

As you find each item with an *italic* name,  
Please circle the words to play my game.  
Begin by facing the entrance to Stan Hywet Hall.  
As you stroll to the left bench, allow the view to enthrall.

That first year F.A.\*, wife Gertrude, daughter Irene, and I toured.  
Seeking inspiration, famous English estates we explored.  
Along the way, we bought a harpsichord for our musical pleasure.  
Of new and old architectural designs, we took measure.  
Wealthy yet humble, the Seiberlings wanted an inviting abode.  
They finally picked English Tudor over fancy French Chateaux.



Charles Schneider

\* F.A. Seiberling and his brother Charles co-founded  
The Goodyear Tire & Rubber Company.

### Open Arms

Turn to face the big lawn with the house at your back.  
Follow the circle drive right, stopping at the map plaque.  
A star marks where you are. Notice how the rooflines curve?  
Pivot. See the *open arms* shape welcoming all without reserve.

### Tudor Revival

Walk on. Just before the drive's triangle, face the house and pause.  
I'll share a little history from which my home design draws.  
Henry VIII and Elizabeth I were members of the royal Tudor clan.  
For them, military defense was most important in a palace plan.  
To make this modern house appear well-established, I mixed styles  
Popular when Tudors battled for power in the British Isles.

Look to the far right. A triangle forms a *half-timbered gable*.  
Count the dark wooden beams between yellow stucco, if you're able.  
Look left at the *main tower*. In the past, these were built to defend.  
Inside the smaller one, behind and right, an elevator now suspends.

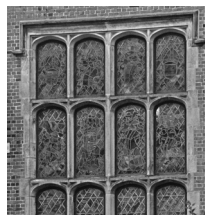
Over the front door is *another gable*—this one with bricks in between.  
Left still is another, called a *parapet*, designed more simple and clean.  
The *Vermont slate roof* that seemingly rises to a steep peak  
Is actually flat on top; all but the right section is purposely oblique.

### English Influences

Continue on the circle drive. At the next bench, play more I Spy!  
Can you spot each item below with your sharp little eye?



Oriel window



Stained glass window



Gargoyle



Lioness

### Lots of Chimneys

Move to the grassy circle's center and face the Hall.  
Can you spy a *huge Tudor arch* over 10 feet tall?  
Look up to find a *lioness* above the gable seen before.  
She represents Mrs. Seiberling, hostess of the manor.

Scan the roof. The manor has 12 *chimneys* (not stacks) up there.  
How many can you see from here? Count if you dare! \_\_\_\_\_

### Not for Us Alone

Step toward the great arch, atop the crest, a *motto* you'll spy.  
It means "Not for Us Alone" in Latin. Can you guess why?

What is the motto? \_\_\_\_\_

### Carvings

Walk up two steps and pause at the massive front door.  
Stone carvers showed their skills by adding *faces* to the decor.  
Above your head, a large carving you will find.  
This *Tudor rose* is another English feature we designed.



Tudor rose

Walk back down the steps and turn right on the circle drive.  
Look up at *the balcony* when at a stone walkway you arrive.  
Up above, on something metal, a date you'll spy.  
What year were the exterior walls completed by? \_\_\_\_\_

### To the Back

Continue on the circle drive. Turn right. To other visitors, tip your hat.  
At the raised terrace, find *another gargoyle* and a *roof that's flat*.  
Imagine mingling guests in fancy clothes and jewels bright.  
Now cross the terrace, down steps and stone path, and turn right.  
Stop between two short stone pillars to take in the back of the manor.  
Here more glass was used to add Arts-and-Crafts-style glamor.

### Wishing Well

Turn right, up the stairs, and right again. To the wishing well, walk.  
Holding up the nearby balcony is a *horse* carved from wooden block.  
I hope by now that your "I Spy" skills are starting to flow.  
Are you ready for more challenges? Well, here we go!

How many lizards can you find carved in the nearby dark wood? \_\_\_\_\_

What letter is at the top of the downspout head? \_\_\_\_\_

What do you think this letter stands for? \_\_\_\_\_

### Fountain and West Overlook

Down the same steps, off the West Terrace's top tier, please shoo.  
Make two rights and stop at the fountain for another house view.  
Although Landscape Designer Warren Manning and I sometimes clashed,  
We managed to bring "inside out and outside in"—a design unsurpassed.

Through the back doors, picture how elegant parties could spill,  
Giving guests chances for both an indoor and outdoor thrill.  
Now pivot yourself around to see a collaborative home run.  
Each summer solstice, doors and overlook align with the setting sun.